



An Introduction to the Cheshire West and Chester Safeguarding Children Board – Your Local Safeguarding Children Board (LSCB).

December 2015



"We seek to ensure that every child and young person in Cheshire West and Chester grows up in circumstances consistent with the provision of safe and effective care".

FOREWORD FROM THE INDEPENDENT CHAIR.



Dear Colleague,

Welcome to our information booklet that we hope will help you to understand more about the Local Safeguarding Children Board (LSCB) in Cheshire West and Chester.

The LSCB is a partnership Board and has senior representation from all agencies/organisations that work directly with; have responsibility for; or who commission services for our children, young people, their families and carers. Page 8 of this booklet will tell you who represents your agency/organisation on the LSCB.

As a partnership Board we are keen to ensure that all our frontline practitioners working with children and young people know about the work the Board is undertaking on your behalf to ensure that we have effective systems in place to keep the children and young people of Cheshire West and Chester safe. We also have a responsibility to engage with children, young people, their families and carers to ask them what works well; areas that we could and should improve; what it feels like for them living in Cheshire West and Chester; and involving them in the redesign of services.

This booklet will give you an overview of the subgroups that do work on behalf of the LSCB. As an LSCB we don't work in isolation and work closely with the Children's Trust, the Health and Wellbeing Board and the Adult Safeguarding Board. The Board members do undertake visits to agencies and organisations to hear what it is like for frontline services working with children, young people, their families and carers. If you would like to be involved in these please let us know; we genuinely want to hear and understand your views.

Our website has a wealth of information regarding safeguarding children, please become familiar with this as the resources are there to support your every day work. We are endeavouring to improve our website all the time and feedback would be most welcome (page 10 tells you who to contact).

If you are reading this booklet as a new person coming to work or be involved with children, young people, their families and carers in Cheshire West and Chester then, on behalf of all Board members, *welcome*; and to others *thank-you* for all your commitment and hard work on a daily basis in supporting our children and young people to feel and stay safe, enjoy and achieve.

Kind Regards

Gill

Gill Frame

Independent Chair Cheshire West and Chester LSCB

What is the LSCB?

“The Local Safeguarding Children Board (LSCB) is the key statutory mechanism for agreeing how the relevant organisations in each local authority area will cooperate to safeguard and promote the welfare of children in that locality; and for ensuring the effectiveness of what they do.”

Working Together 2015

Regulation 5 of the Local Safeguarding Children Board Regulations 2006 sets out the functions of the LSCB.

These include:

- 1 (a) developing policies and procedures for safeguarding and promoting the welfare of children in Cheshire West and Chester, including policies and procedures in relation to:
 - (i) the action to be taken where there are concerns about a child’s safety or welfare, including thresholds for intervention;
 - (ii) training of persons who work with children or in services affecting the safety and welfare of children;
 - (iii) recruitment and supervision of persons who work with children;
 - (iv) investigation of allegations concerning persons who work with children;
 - (v) safety and welfare of children who are privately fostered;
 - (vi) cooperation with neighbouring children’s services authorities and their Board partners;
- (b) ensuring we communicate to people and agencies in Cheshire West and Chester the need to safeguard and promote the welfare of children, raising their awareness of how this can best be done and encouraging them to do so;
- (c) monitoring and evaluating the effectiveness of what is done by the authority and their Board partners individually and collectively to safeguard and promote the welfare of children and advising them on ways to improve;
- (d) participating in the planning of services for children in Cheshire West and Chester; and
- (e) undertaking reviews of serious cases and advising the authority and our Board partners on lessons to be learned.

How does the LSCB fulfill its core functions?

Cheshire West and Chester Safeguarding Children Board is supported by the Executive Committee and a range of sub-groups, each having its own work plan to enable us to achieve our priorities.

Policy and Practice Sub-Group

This group reviews and maintains the LSCB multi-agency policies and procedures. At times we need to alter the existing procedures to help practitioners be clear on their role and to stay up to date with legislative changes. You can access all of our policies and procedures via our website at <http://www.cheshirewestlscb.org.uk/> This group also maintains close links with the LSCB Pan Cheshire Policy and Procedures Group who develop and review policies that are common to all four LSCB areas within Cheshire.



Audit and Case Review Sub-Group

This group has responsibility for conducting reviews and audits which are aimed at driving improvements in safeguarding practice and recognising and disseminating good practice. There are a number of different types of case reviews:

- Serious Case Review (SCR)– for every case where abuse or neglect is known or suspected and either a child dies; or a child is seriously harmed, and there are concerns about how professionals worked together to safeguard the child;
- Practice Learning Review (PLR) – these reviews are conducted when the criterion for an SCR has not been reached but it is recognised that there may be opportunities for learning and improving multi-agency practice.

The group also consider findings from a range of audits of case practice including: **Multi-Agency Audits** that involve practitioners coming together in focus groups to discuss how the case has been managed; **Themed Audits** which are focused on particular areas of practice, sometimes identified as a result of findings from multi-agency audits or issues reported nationally. Themed audits are undertaken as independent file reads by conference chairs.

Learning and Development Sub-Group

This group is collaboration between the Local Safeguarding Children Board and Local Safeguarding Adult Board and also works closely with the Audit and Case Review group to take forward and prioritise the learning and development issues arising from case reviews and audits. It must ensure that training needs within the workforce are identified and that the provision of inter-agency safeguarding training and other development opportunities meet those needs and that the quality of provision is such that training has the desired impact on practice.

Missing from Home, Child Sexual Exploitation and Trafficked Children sub-group

This group oversees Cheshire West and Chester's Implementation of the Missing from Home protocol, the Child Sexual Exploitation Action Plan and the collection and analysis of data including missing from education and links to Child Sexual Exploitation and trafficking. There are 5 key strands to the local action plan that is the driver for the work of this sub group:- Raising awareness; Understanding what is happening; Developing a strategic response; Supporting victims of exploitation; and Facilitating policing and prosecutions.

Quality Assurance Sub-Group

This group scrutinises performance information in relation to the work of partners and is responsible for ensuring that sufficient data is collated in order that the Board has a clear picture of the impact of safeguarding arrangements for the children and young people of Cheshire West and Chester.

Child Death Overview Panel

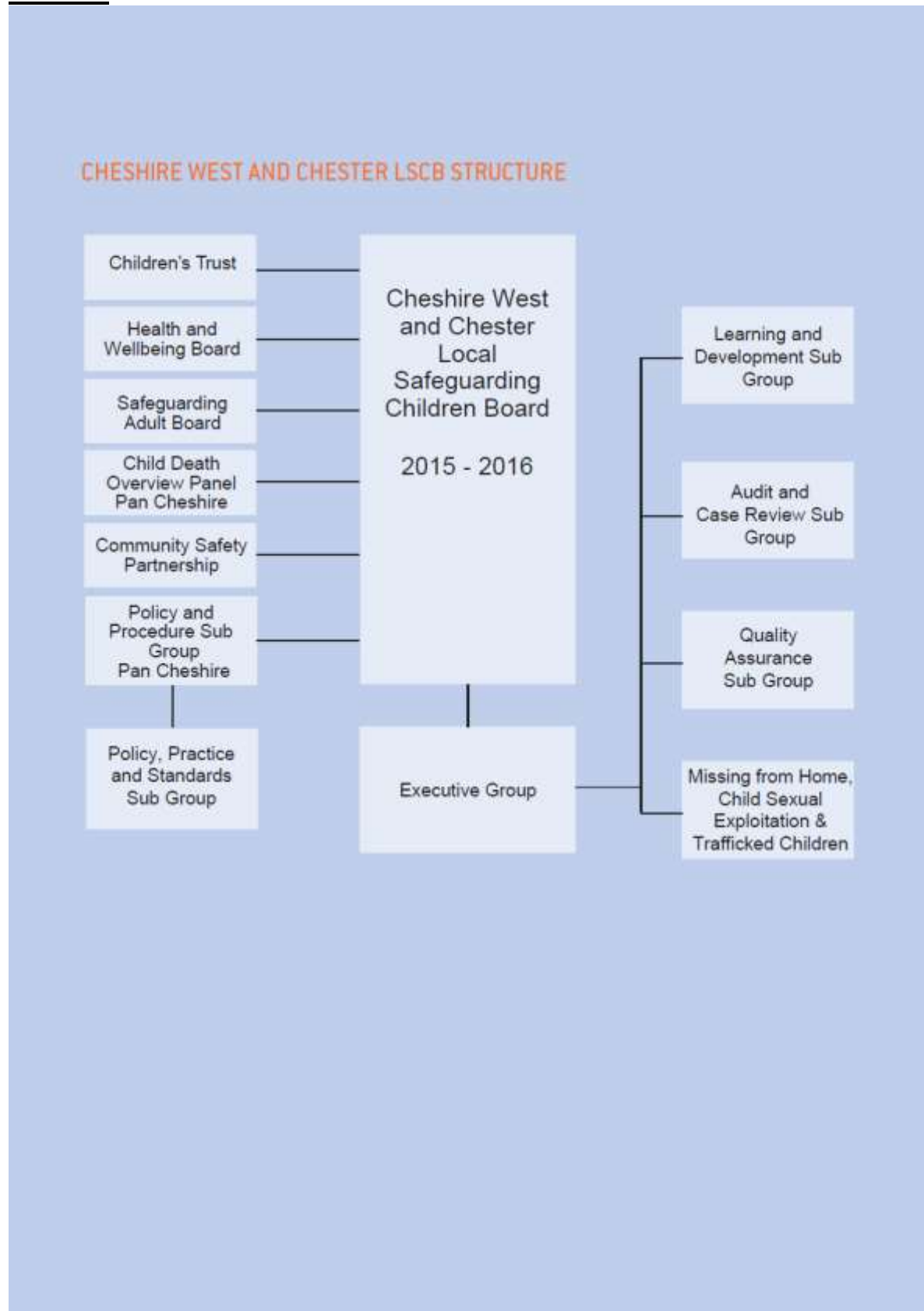
This Pan Cheshire group reviews all child deaths up to the age of 18, excluding those babies who are stillborn. The group discusses each child's case and provides any relevant information or specific actions related to individual families to those professionals who are involved directly with the family so that it can be conveyed in a sensitive manner. The group determines whether the death was deemed preventable, that is, those deaths in which modifiable factors may have contributed to the death and decides what, if any, action could be taken to prevent future such deaths. The group identifies patterns or trends in local data and reports these findings to the LSCB.



LSCB Training Pool

Are you an experienced practitioner who would like to get involved in training and development opportunities across the partnership? The LSCB operates a multi-agency training pool which delivers the LSCB training events on behalf of the Board. We provide the Train the Trainer sessions to ensure you are confident with the material you are presenting to partners, and the added benefit is that you can take this back into your own agency to enhance your teams knowledge. If you are interested in joining the training team please contact the LSCB Learning & Development Officer, Dawn Lewis for more information on dawn.lewis@cheshirewestandchester.gov.uk. (Please ensure you seek your Manager's approval).

The LSCB structure including its relationship with Local Boards



How can the LSCB help you?

Ask yourself.....

Do you know what abuse looks like? There is a wealth of information on our website covering Neglect; Child Sexual Exploitation, Fabricated illness and much more that can develop your awareness of the different forms abuse can take.

What are the thresholds for concern?

The Continuum of Need thresholds document provides guidance on how to manage these concerns across the needs spectrum.

<http://cheshirewestlscb.org.uk/professionals/continuum-of-need/>

Do you know how to report concerns and what to do if you are not listened to? Do you know how to escalate concern? Please see the LSCB Escalation Policy for advice <http://cheshirewestlscb.org.uk/policy-and-practice/escalation-and-resolution-policy/>

Are you familiar with the themes from case reviews when safeguarding “went wrong”? It is important to understand how safeguarding has failed in the past so that the same mistakes are not repeated in the future. The LSCB publish key themes and learning from Serious Case Reviews and Practice Learning Reviews <http://cheshirewestlscb.org.uk/about-us/case-reviews/>
Please join us at a lunchtime briefing for the latest information <http://cheshirewestlscb.org.uk/training/>

Would you know what to do in the event that there is a serious incident involving a child you are supporting? Do you know the criterion for a serious case review?

All cases that may meet Serious Case Review criteria MUST be reported (by any agency) to the LSCB for the ACR Sub Group (Criteria Panel). SCR procedures must then be followed by all agencies. Cases below SCR thresholds but that are judged to contain opportunities for learning will be undertaken as Practice Learning Reviews. The LSCB has produced guidance on how it considers and conducts PLRs and how you can refer a case to the Audit and Case Review sub-group <http://cheshirewestlscb.org.uk/about-us/case-reviews/>

We offer a broad range of multi-agency training for professionals and we are always keen to hear from you if you have training needs that are currently unmet. You can access our training events via <http://cheshirewestlscb.org.uk/training/>

Who is your LSCB?

Cheshire West and Chester Safeguarding Board are represented by many local agencies and voluntary community groups.

It is important that you know who represents your agency at the Board. You should be hearing from them frequently about the work that is being undertaken by the Board. If you have any safeguarding concerns pertaining to practice your Board representative is also your point of contact to escalate those concerns up to the Board for action (in line with the Escalation Policy highlighted above).

AGENCY	REPRESENTATIVE
Cheshire West & Chester Local Authority	
Children & Young Peoples Directorate	Gerald Meehan, Director of Children's Services
Children's Social Care	Emma Taylor, Head of Service
Integrated Early Support	Helen Brackenbury, Head of Service
Safeguarding Unit	Paul Jenkins, Senior Manager
Education	Mark Parkinson, Head of Service
Local Safeguarding Adult Board	Jill Broomhall, Head of Prevention and Wellbeing
Commissioning	Alistair Jeffs, Head of Strategic Commissioning
Housing Solutions	Alison Amesbury, Senior Manager, Strategic Housing
Public Health	Tony Sharples, Specialist
Legal Services	Caroline Crosby, Legal Safeguarding Manager
Criminal Justice	
National Probation Service	Chris Gwenlan Senior Probation Officer
Community Rehabilitation Services	Donna Yates, Assistant Chief Executive
Youth Offending Services	Gareth Jones, Head of Service
Cheshire Police- Public Protection Unit	Nigel Wenham, Detective Chief Inspector
CAFCASS	Tom Cheadle, Service Manager
Health	
NHS England	Lisa Cooper, Assistant Director of Nursing, Quality & Safety (Patient Experience & Safeguarding)

NHS West Cheshire Clinical Commissioning Group	Paula Wedd, Director of Quality and Safeguarding
NHS South Cheshire & NHS Vale Royal Clinical Commissioning Groups	Judith Thorley, Executive Nurse
Cheshire and Wirral Partnership NHS Foundation Trust	Stephen Scorer, Director of Nursing, Therapies and Patient Partnership
Countess of Chester Hospital NHS Foundation Trust	Alison Kelly, Director of Nursing & Quality
East Cheshire NHS Trust	Kath Senior, Director of Nursing, Performance & Quality
Mid Cheshire Hospital NHS Foundation Trust	Alison Lynch, Director of Nursing & Quality
Designated Professionals	Anne Eccles, Designated Nurse Safeguarding Children Dr Rajiv Mittal, Designated Doctor Safeguarding Children.
Education	
Primary Schools	Nicky Dowling, Head Teacher, Highfield Primary School
Secondary Schools	Steve Dool, Head Teacher, Neston High School
Special Schools	Samantha Myers-Whittaker, Archers Brook Residential School
Further Education	Dorothy Bedford, West Cheshire College
Independents	
Cheshire West & Chester Council	Cllr Nicola Meardon, Lead Member.
Board Chair	Gill Frame
Voluntary Community Faith Sector	Pauline Ruth, Hub Development Officer.
Lay Member	Gareth Cheesman

Involving the local community in our work is important to us. To be effective the communities we serve need to know about the work the LSCB and its partner agencies do to help and protect local children and young people. To support this, our lay member works directly with children and young people to promote the work of the Board, and develop their understanding of what “staying safe” looks like.

Keeping in touch

We publish a quarterly bulletin to keep practitioners up to date with local and national safeguarding news. Please let us know if there are topics you would like us to cover. You can now sign up to receive regular updates <https://secure.cheshirewestlscb.org.uk/contact-us/>

We are always keen to hear your views. We want to know what is working well and equally how we can improve our services.

You can call/e-mail the Business Unit Team on the details below:

Sian Jones

Business Manager. Tel: 0151 356 6835

Email: sian.jones@cheshirewestandchester.gov.uk

Noreen Gallagher

Business Support Officer. Tel: 0151 356 6614

Email: noreen.gallagher@cheshirewestandchester.gov.uk

Cassie Peters

Administrator. Tel: 01244 9 73230

Email: cassie.peters@cheshirewestandchester.gov.uk

For Quality Assurance Queries

David Holman

Quality Assurance Officer. Tel: 0151 337 3342

Email: david.holman@cheshirewestandchester.gov.uk

For Training Queries

Dawn Lewis

Training Officer. Tel: 0151 356 6825

Email: dawn.lewis@cheshirewestandchester.gov.uk

Abbi Cooper –

Training Administrator. Tel: 0151 356 6819

E-mail: lscbtrainingandevents@cheshirewestandchester.gov

Please note that the images used in this document are the property of LiveCheshire! and cannot be copied or used in any other manner without the express permission of

LiveCheshire!